



## Screeed underfloor system





## Help your customers to stay ahead of the game!

The face of modern office architecture is shaped by large glass frontages whereas traditional external and internal walls are increasingly on their way out. This means that electrical engineers need to go ever further «underground» if they are to set up a capable, high-performance electrical infrastructure.



### **The right system for screed floor**

The new underfloor trunking system from Hager offers the perfect solution for screed floor and for every requirement relating to electrotechnical installations.

Alongside standard system, we also offer customised project solutions for special requirements, e.g. systems for heavy-duty loads.



## Screed underfloor system

The quick installation system for screed application allows providing flexible solution for all types of screed, delivering impressive and practical installation advantages.

All underfloor boxes are made out of zinc-plated steel, which ensures a perfect protection against corrosion.



The screed underfloor system can be installed in offices or administrative buildings, exhibition rooms, malls, or in any commercial construction. The system can be applied where it can even resist harsh conditions of use (heavy loads, high traffic areas, dust and dirt, ...). The screed underfloor system is a solution for complex power and communication requirements.

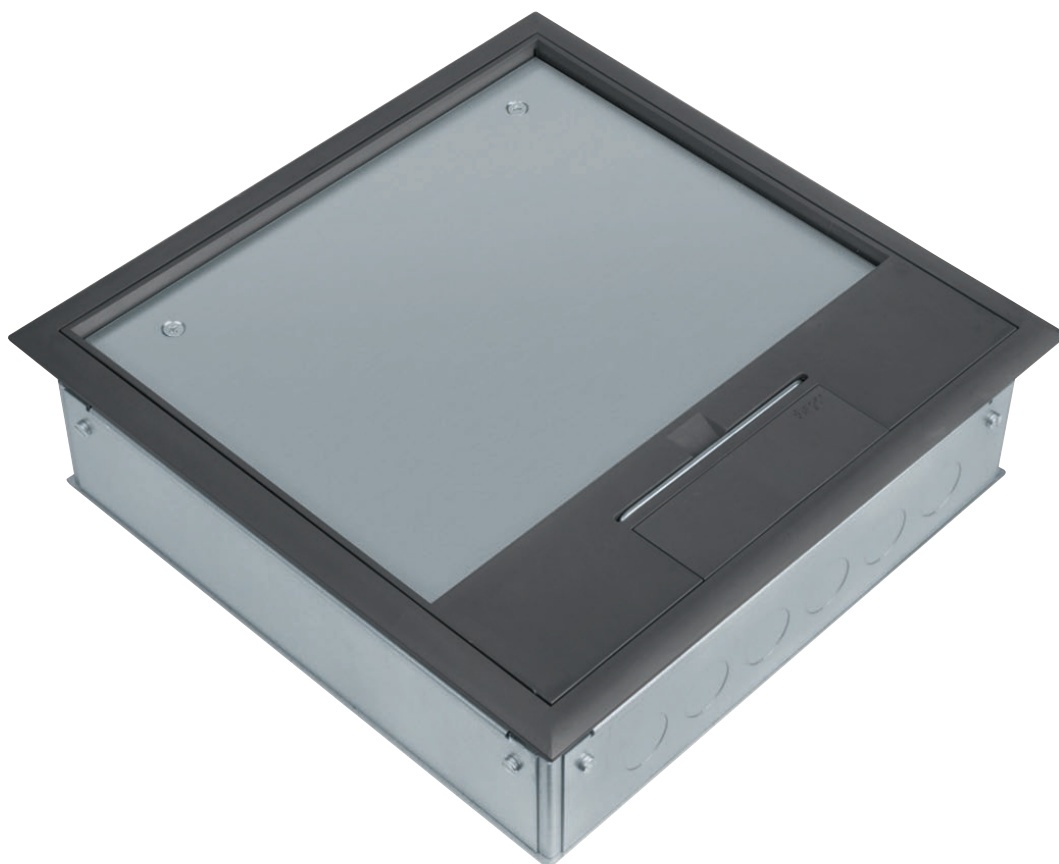
Underfloor system is intended for screed laying systems. Screed levels can be adapted from 80 mm to 110 mm.

# Screed underfloor system

## Quick to implement, easy to use

The system is compliant with the current requirements of BS regulations. Tested to EN50085-2-2.

Screed floor system offers you great functionality, as it is the most frequently used technology for floor installation. The floor boxes are interconnected via conduits or trunkings, allowing an optimized supply of the building as well as a direct access from the floor to electrical power, data and telecommunication.



### The advantages for you:

- Free standing lid at 90°
- Fast and simple installation thanks to the “push & go” feature
- Sustainable quality
- Easy cabling
- Mounting direction of the accessories can be changed even after screeding

### Technical data:

- Box dimensions: 268 x 268 mm
- 8 mm carpet or tile finish
- Galvanised steel to prevent corrosion
- Screed height adjustable from 80 to 110 mm
- Vertical load of 1.5 kN

**Technical data**

- Galvanised steel
- Rust protection
- Adapted for conduits with a diameter of 25mm
- Special plate adapted for trunking installation (25 or 38 mm height)
- Supply unit made of polyamide according to EN 50085-2-2

**Application**

- 3 compartments
- Mounting in screed
- Height adjustable by lid and frame, 80 - 110 mm

**Lid:**

- For dry rooms with dry cleaned floors
- Carpet or tile flooring height of 8 mm

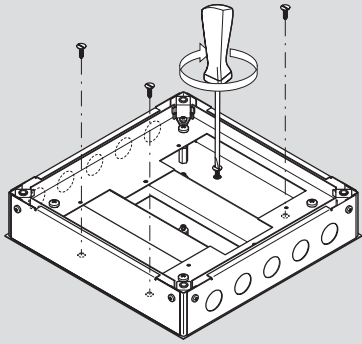
**Plates:**

Function as an outlet box to install power and data

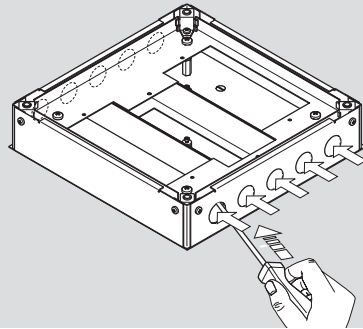
	Designation	Characteristics	Cat. ref.
	<b>Service outlet box (outlet and lid)</b>	dimensions: 268 x 268 mm	<b>UDBSQ06</b>
	<b>Blank plate</b>	sheet steel for service outlet box	<b>GTVPB00</b>
	<b>13A BS twin switched socket outlet</b>	plate and module	<b>GTVB25S</b>
	<b>Data outlet plate</b>	2 x 2 gang (without data module) sheet plate	<b>GTVDP4M</b>
	<b>Socket modules plate</b>	2 x 2 gang (without data module) sheet plate	<b>GTVSP452</b>
	<b>RJ45 data module</b>	keystone 8 pin cat6 data dimensions: 22.5 x 45 mm	<b>WGMRJ456</b>
	<b>RJ11 data module</b>	keystone 4 pin cat6 telephone dimensions: 22.5 x 45 mm	<b>WGMRJ11</b>
	<b>Blank module</b>	white plastic dimensions: 22.5 x 45 mm	<b>WGMV1</b>
	<b>BS module</b>	13A BS socket dimensions: 45 x 45 mm	<b>WGSM113</b>

# Screed floor box Mounting

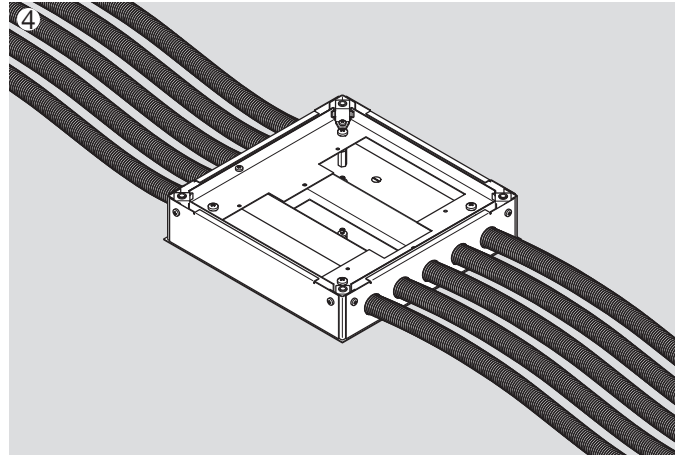
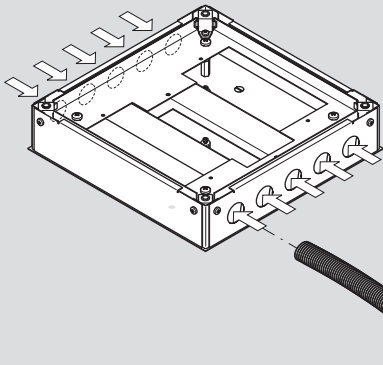
1



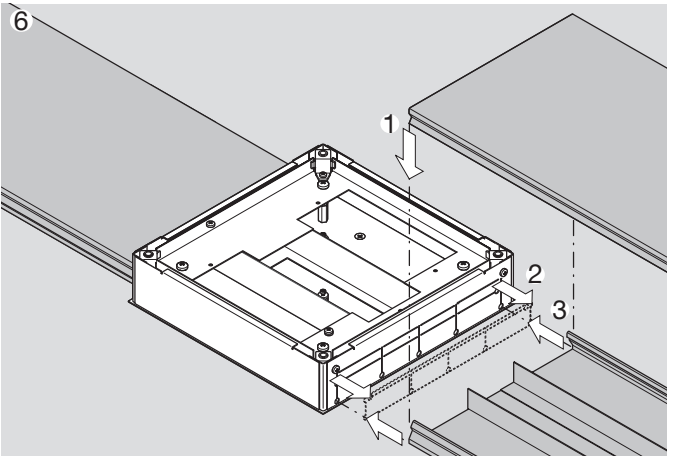
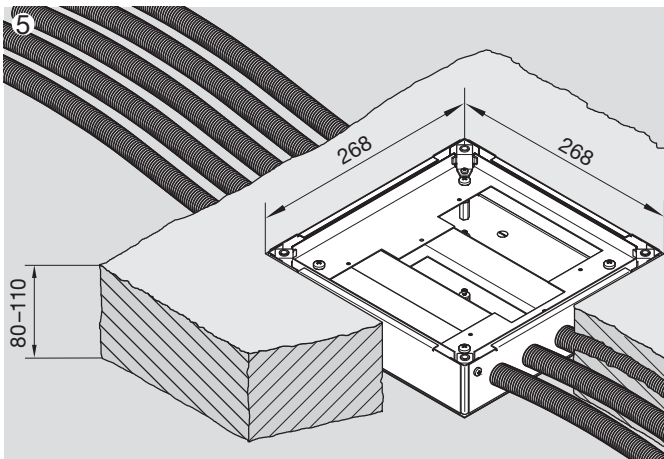
2



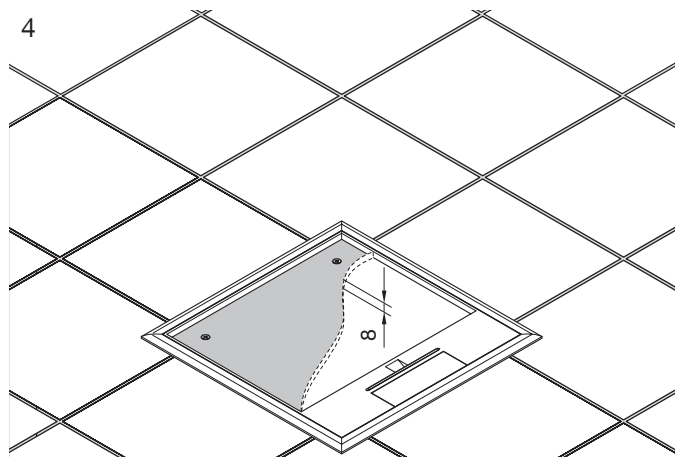
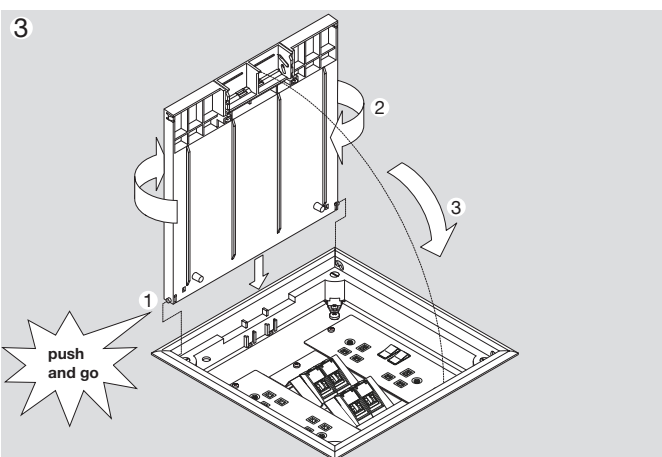
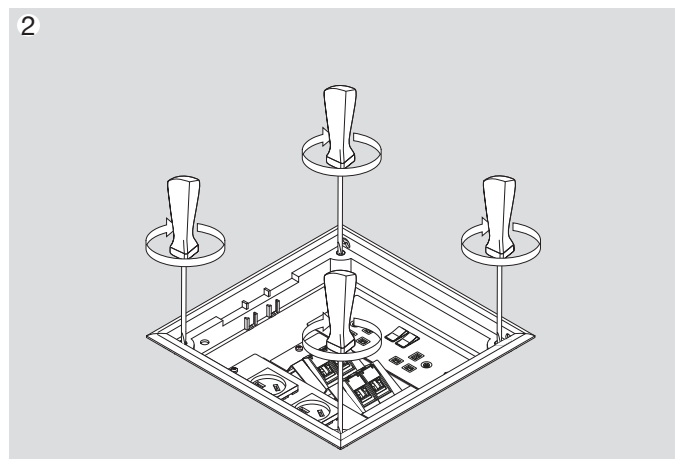
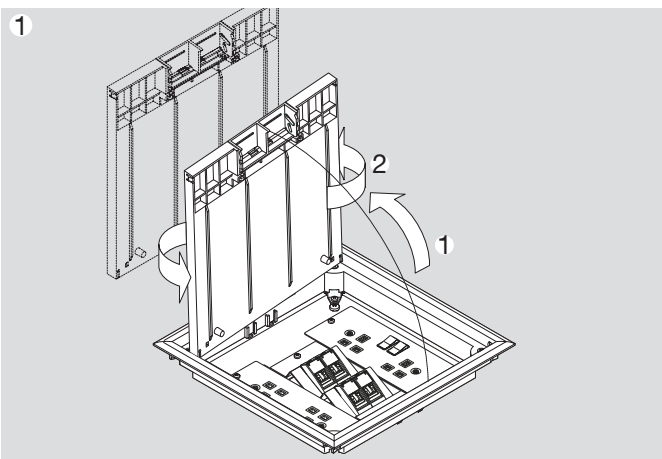
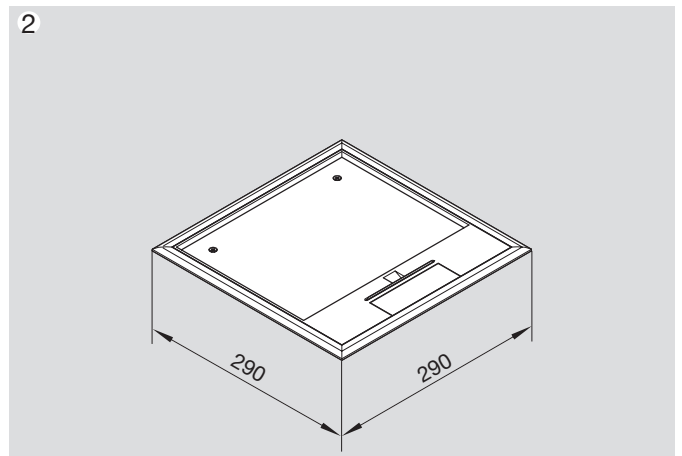
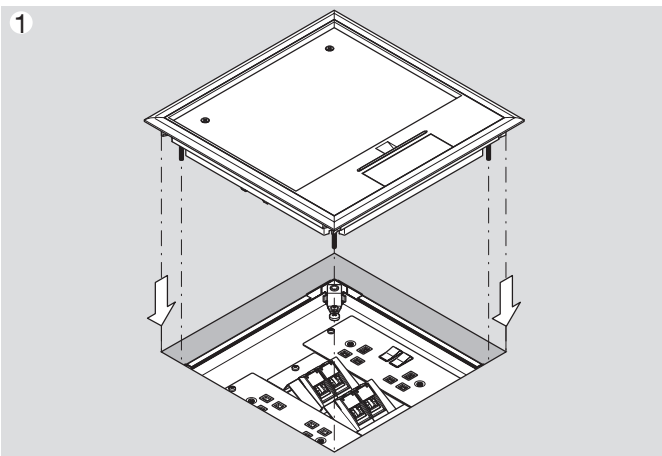
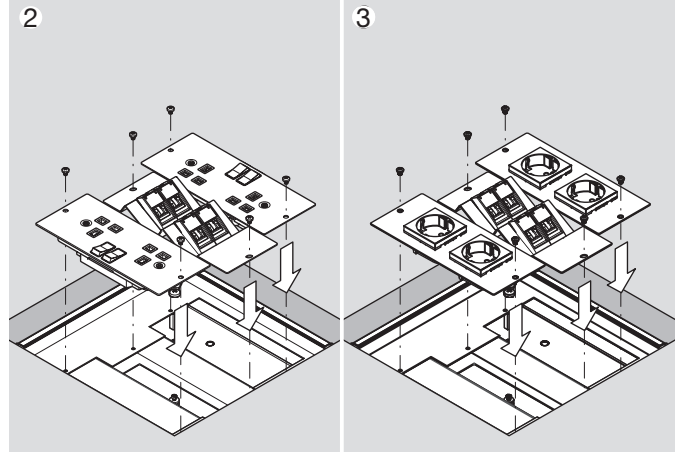
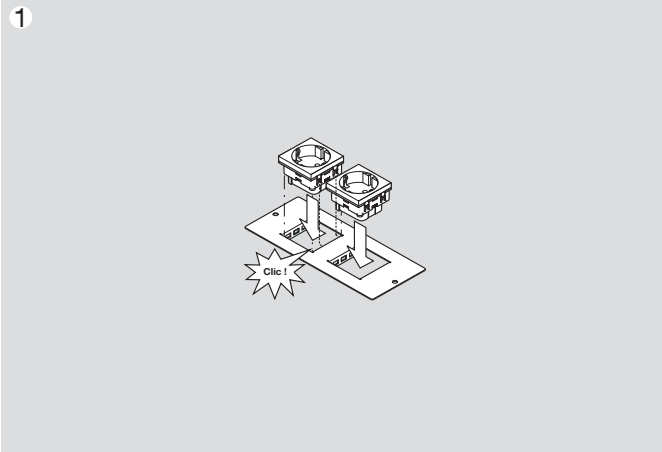
3

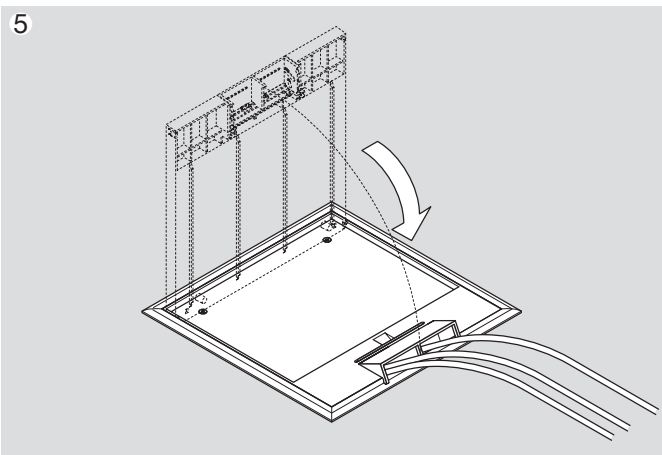
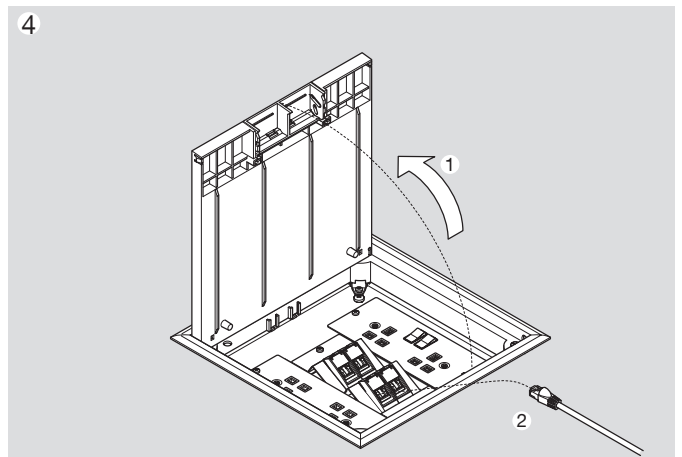
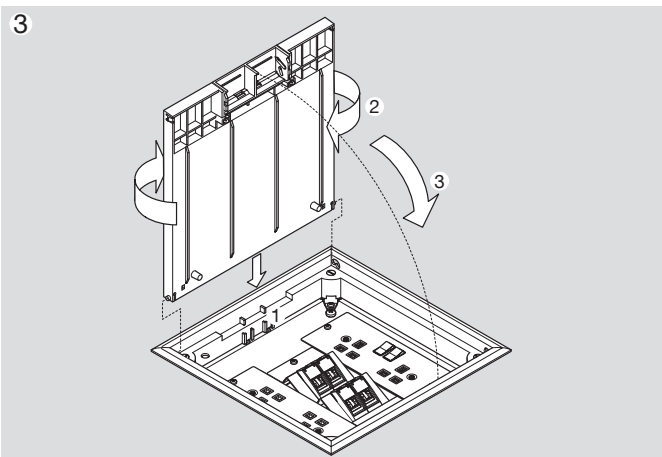
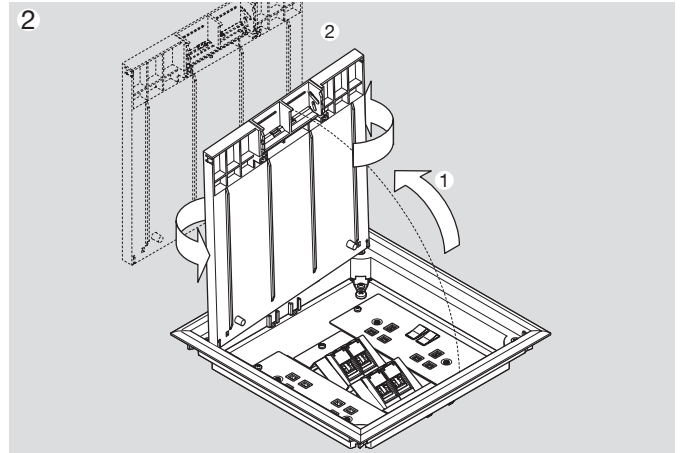
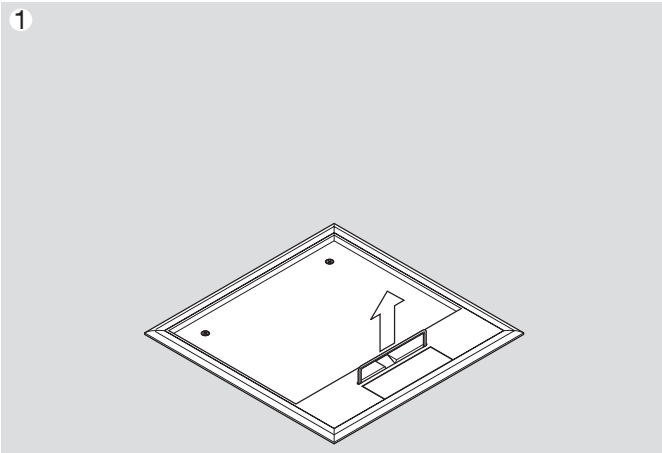


5









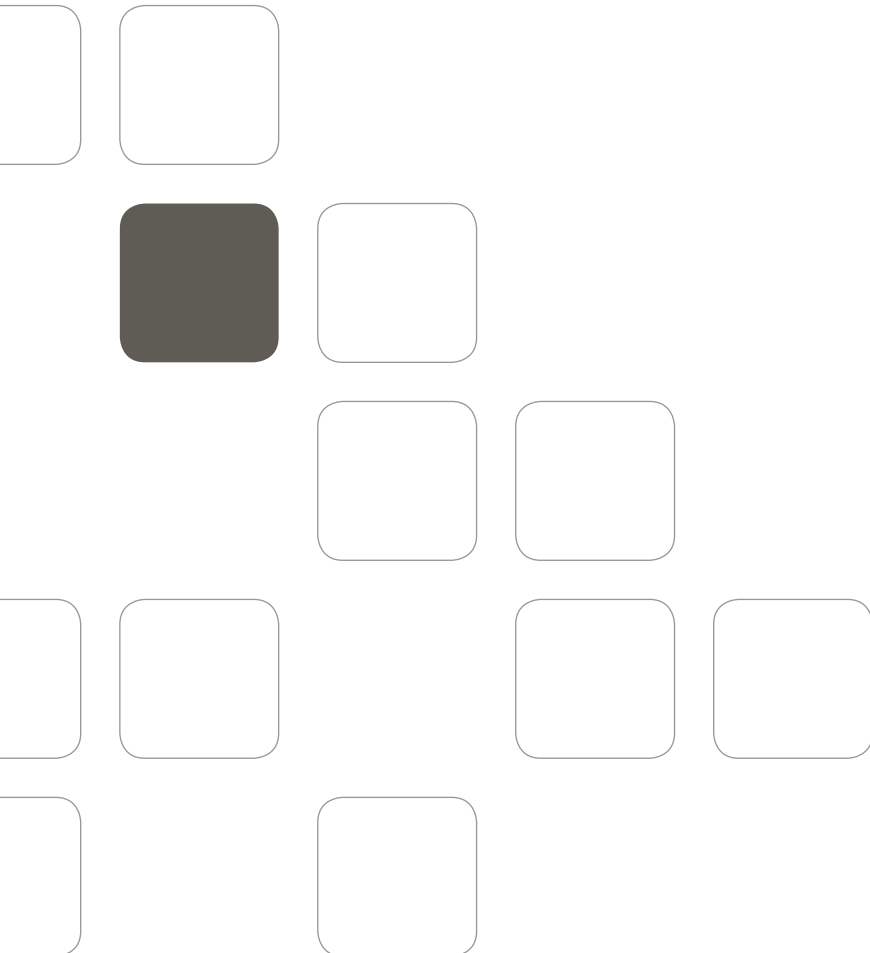


Hager Electro S.A.S.  
132 Boulevard d'Europe B.P.3  
67215 Obernai Cedex  
France

Tel: +(33) 3 88 49 50 50  
Fax: +(33) 3 88 49 51 44  
[www.hager.com](http://www.hager.com)

Hager Middle East FZE  
Office #219  
Laboratory Complex Building  
Dubai Science Park  
Al Barsha South 2  
P.O. Box No. 61056  
Dubai - UAE

Tel: +(971) 4 5105300  
Fax: +(971) 4 4251598  
[www.hager.ae](http://www.hager.ae)



Local representative

